

Change the Size of the Mouse Pointer

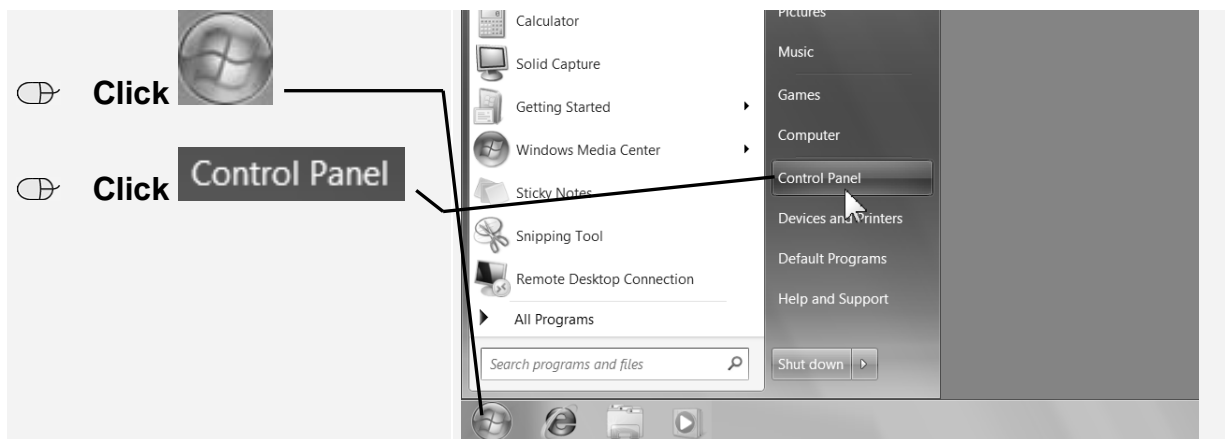
Subject
Windows 7

Key Words
Windows 7, adjust settings, mouse pointer

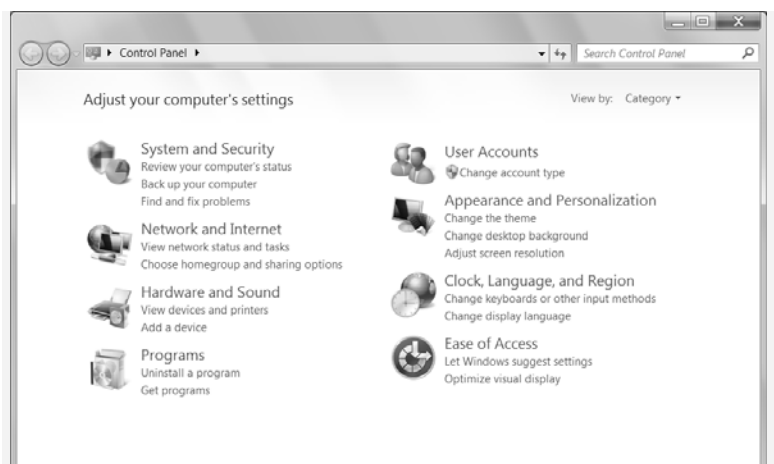
Introduction

There are various ways to adjust the settings for your mouse. If you still are not working comfortably with the mouse despite sufficient practice, you can try changing the settings.

You can make the mouse pointer more visible by making it larger. This is how to change the mouse pointer:



Now you see this window containing icons for the various parts of your computer, divided into categories.



You can adjust one of the parts by clicking the icon or category title.

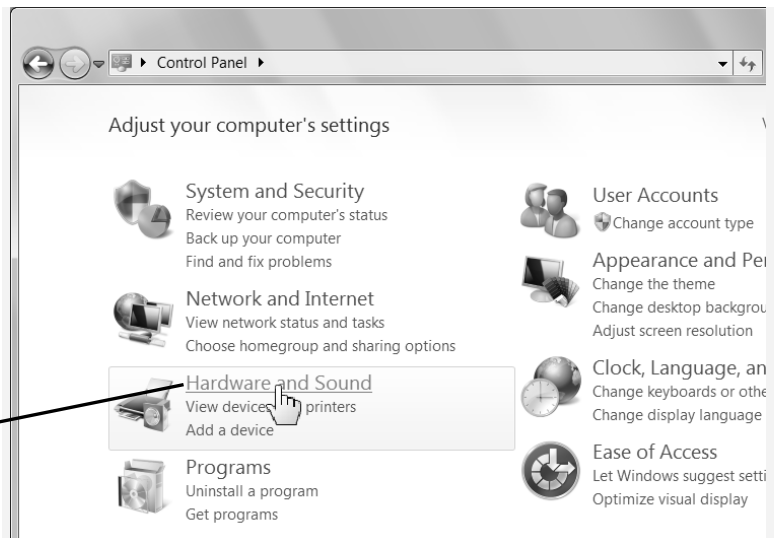
The mouse is located in the category

Hardware and Sound :



Click

Hardware and Sound

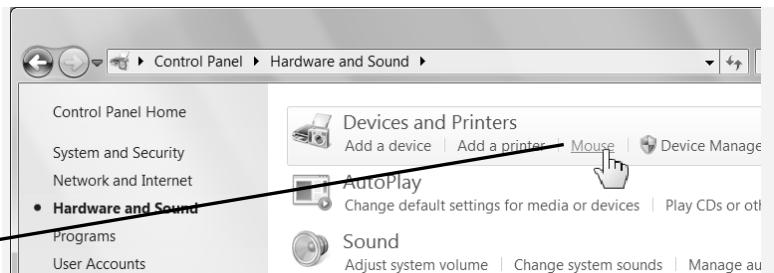


Now you will see a new window:



Click

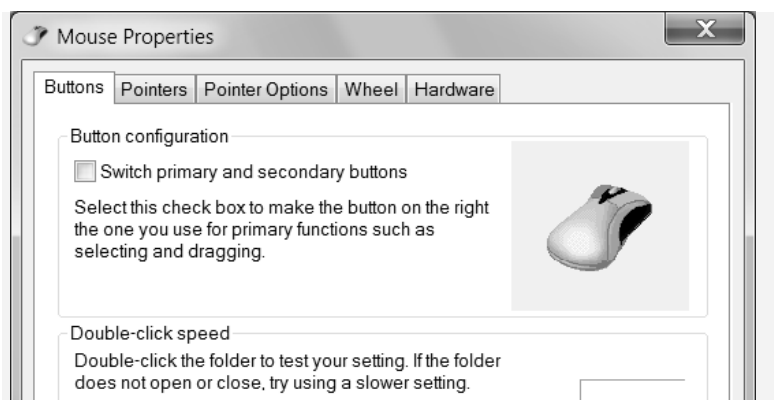
Mouse



You now see the window *Mouse Properties*:

Please note:

This window may have a different appearance on your screen. Mouse manufacturers sometimes make a modified version of this window for their products.



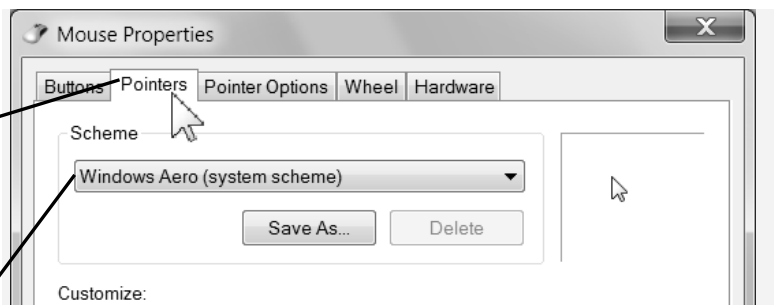
Click the tab

Pointers

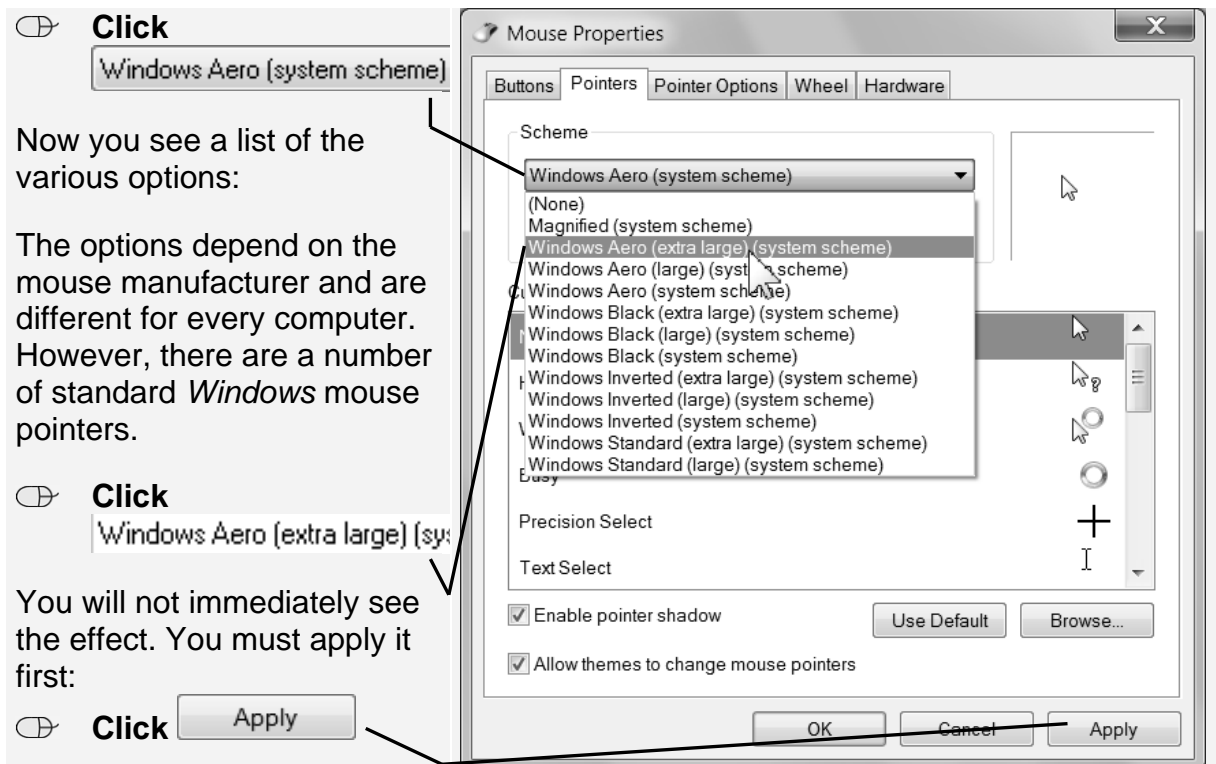
Under the box **Scheme** you probably see that

Windows Aero (system scheme)

is being used:



You can choose a larger mouse pointer. It might be easier for you to see. This is how:



Now you see that you have a very large mouse pointer:

If you like it, you can leave the setting as it is. If not, you can select the regular

scheme Windows Aero (system scheme) or you can try one of the other options.



HELP! Nothing changes.

When you select a different setting, you must always first tell the computer to apply it:

