

Dragging and Dropping Files

Subject
Windows 7

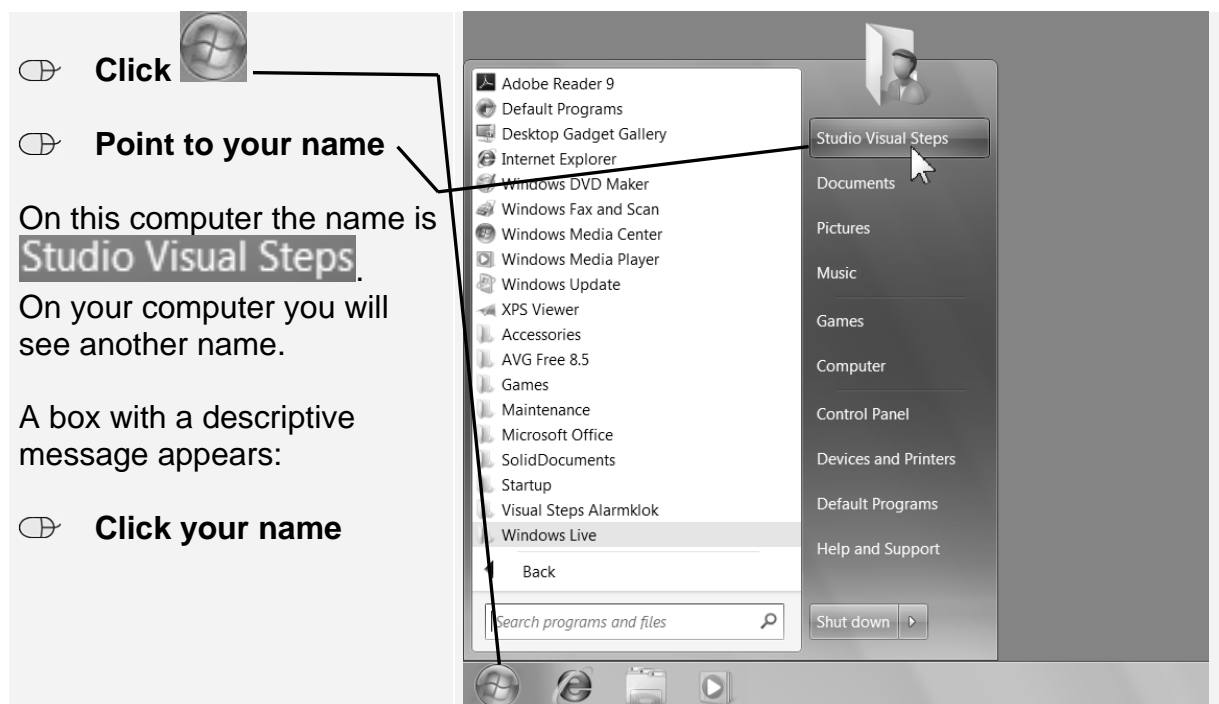
Key Words
Windows 7, folder, files, dragging, dropping

Introduction

The easiest way to move files to another folder is by *dragging and dropping*.

Here is how you do it:

First you are going to open your *Personal folder*. Your *Personal folder* is a folder that contains your *My Documents*, *My Pictures*, *My Music*, *My Contacts* folders, as well as other folders. The *Personal folder* is labeled with the name you use to log on to your computer. The *Personal folder* is located at the top of the Start menu. Take a look:



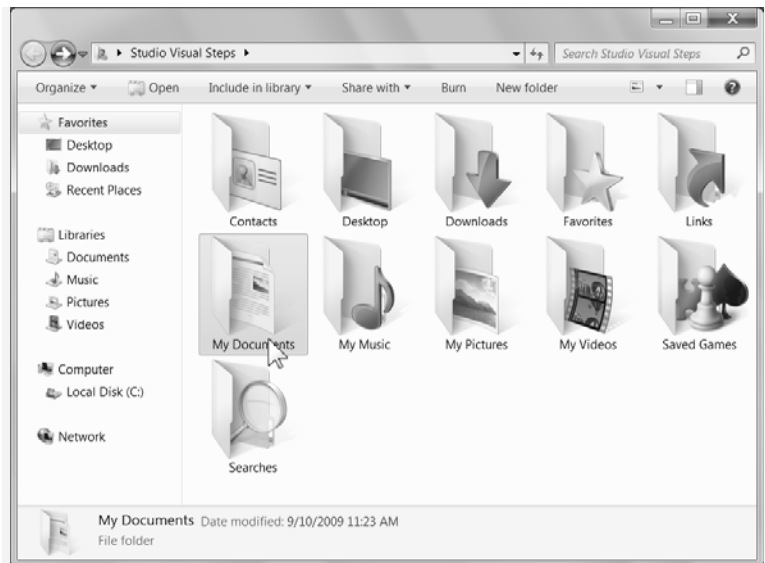
Windows Explorer will be opened.

Now you need to open the *My Documents* folder:

 **Double-click**



The *My Documents* folder will be opened.

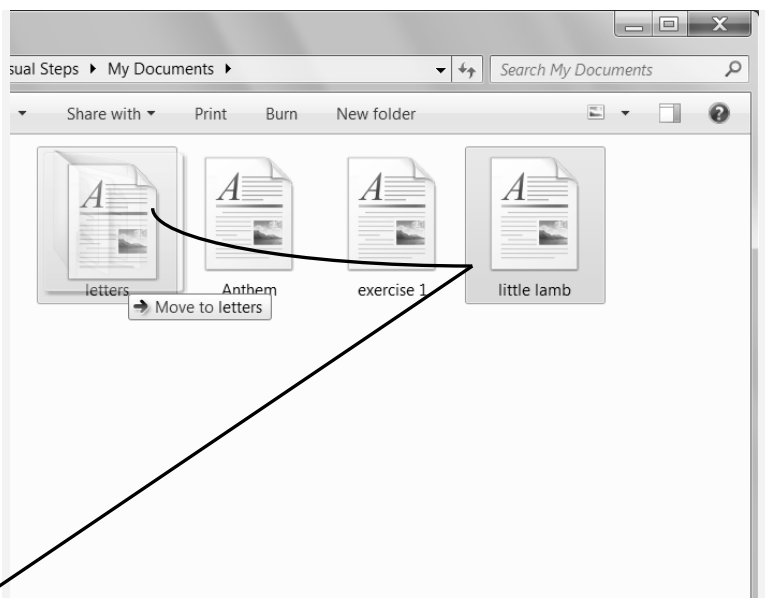


 **Point to** little lamb

 **Press the left mouse button and keep it depressed**



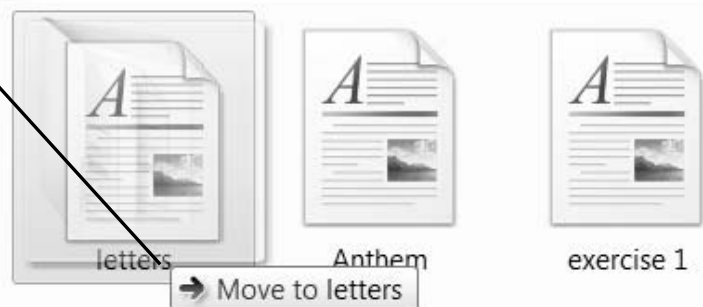
 **Drag** little lamb **to** letters



When you see this box

 **appear:**

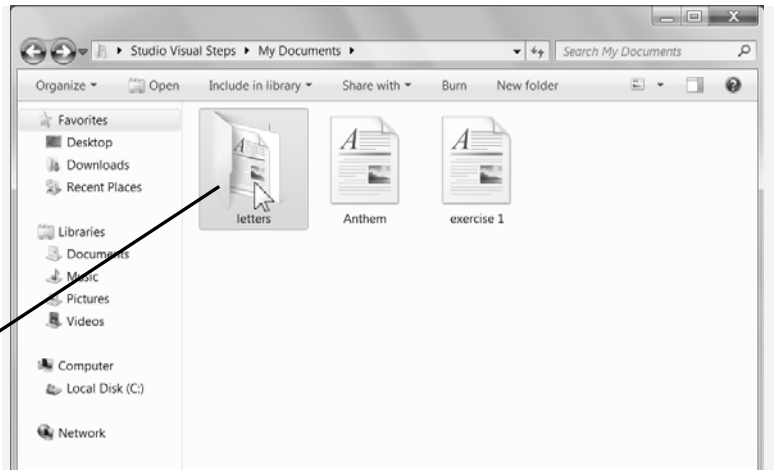
 **Release the mouse button**



To open the *letters* folder:



 **Double-click**



You will now see the *little lamb* file appear in the *letters* folder:

